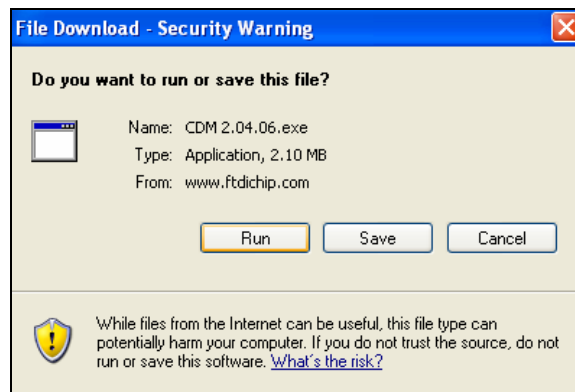




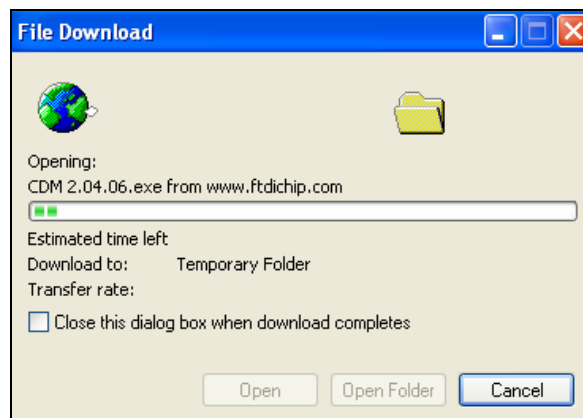
CP9185 and CP9190 FTDI / FT232R USB UART / USB Serial Converter Driver Installation Instructions

Windows NT, 2000, and XP

1. Click the **FTDI / FT232R Driver for Windows NT, 2000, and XP** link
2. Click **RUN** if a security warning is displayed



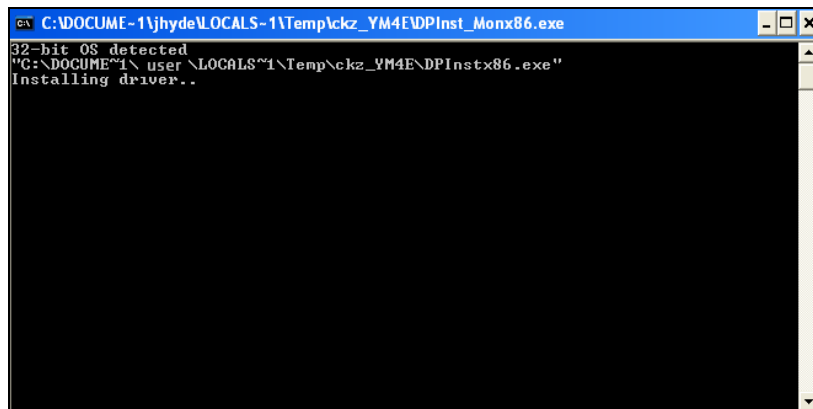
3. Allow the file to download



4. Click **RUN** if another security warning is displayed



5. The USB driver will install

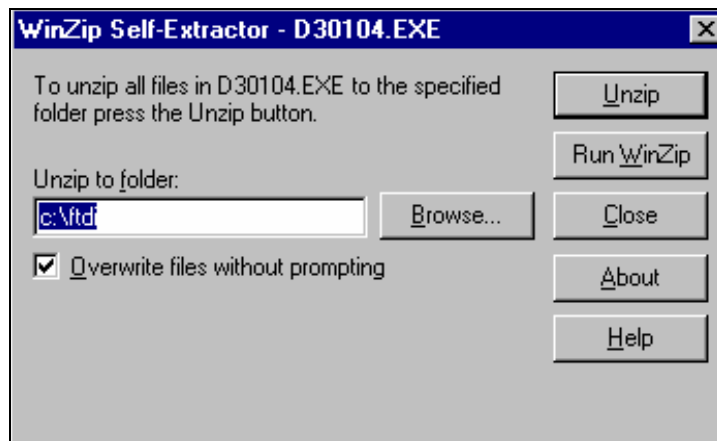


6. The Driver Installation is complete. Connect tool to PC and use as instructed in the Owner's manual.

Note: If Scanning Suite does not recognize that the tool is plugged into the USB port after installing this driver, you must install the **SPX USB Device Driver**. Instructions for this driver can be found on our website: <http://actron.com/downloads/index.php>

Windows 98 and ME

1. Click the **FTDI / FT232R Driver for Windows 98 and ME** link
2. Click **Unzip**



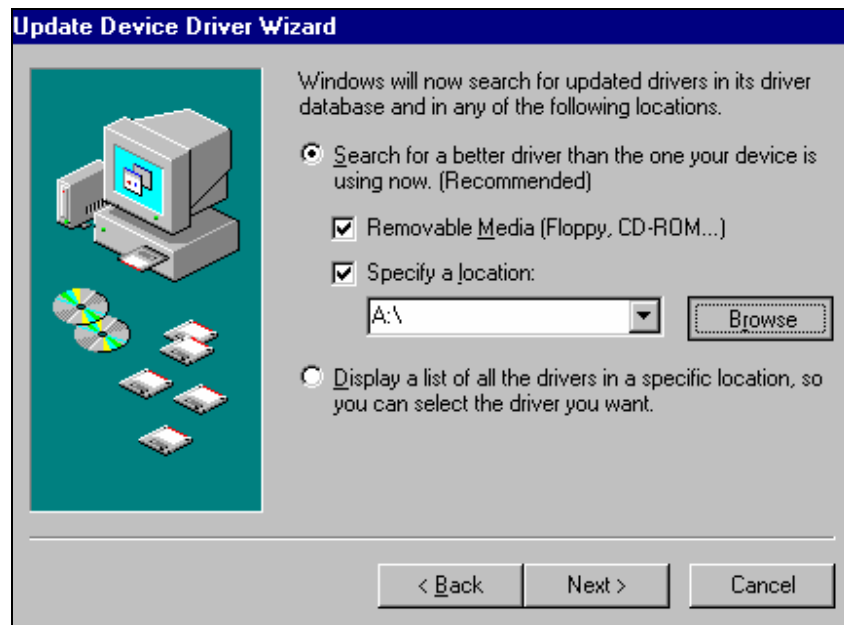
3. Click **OK**



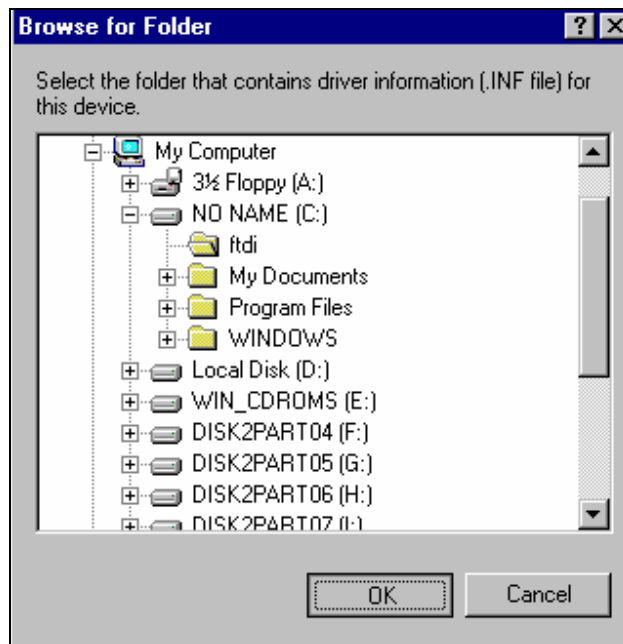
4. Plug tool into PC, select **Specify the location of the driver (Advanced)**, and click **Next >**



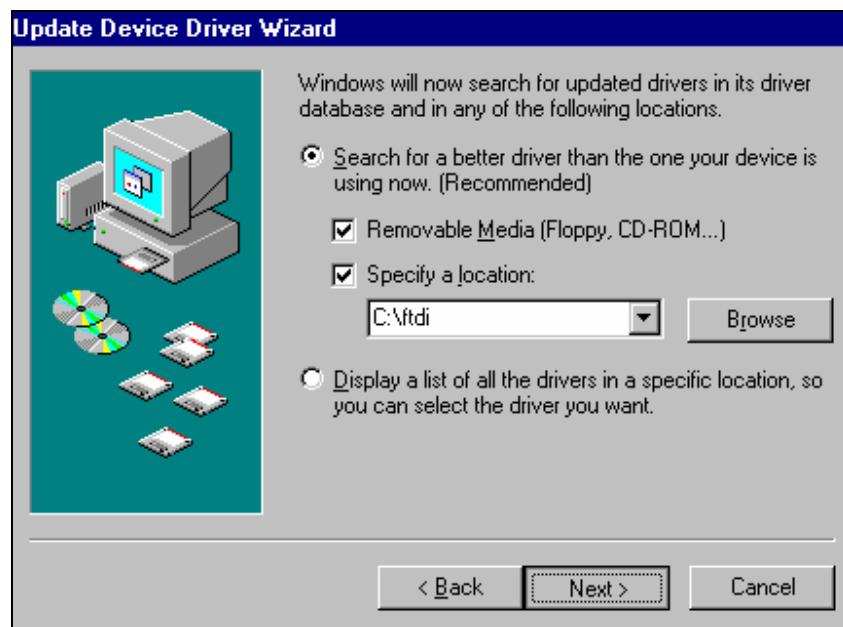
5. Select **Specify a location:** and click **Browse**



6. Choose **My Computer\C:\ftdi** and click **OK**



7. Click **Next**



8. Click **Next >** to continue



9. Click **Finish**



10. The Driver Installation is complete. Use tool as instructed in the Owner's manual.

Note: If Scanning Suite does not recognize that the tool is plugged into the USB port after the installation or the below message is displayed during the installation, you must install the **SPX USB Device Driver**. Instructions for this driver can be found on website: <http://actron.com/downloads/index.php>

