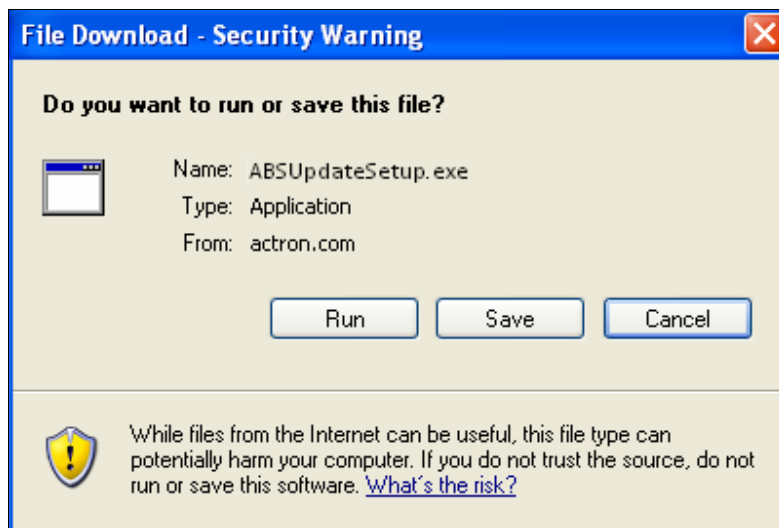


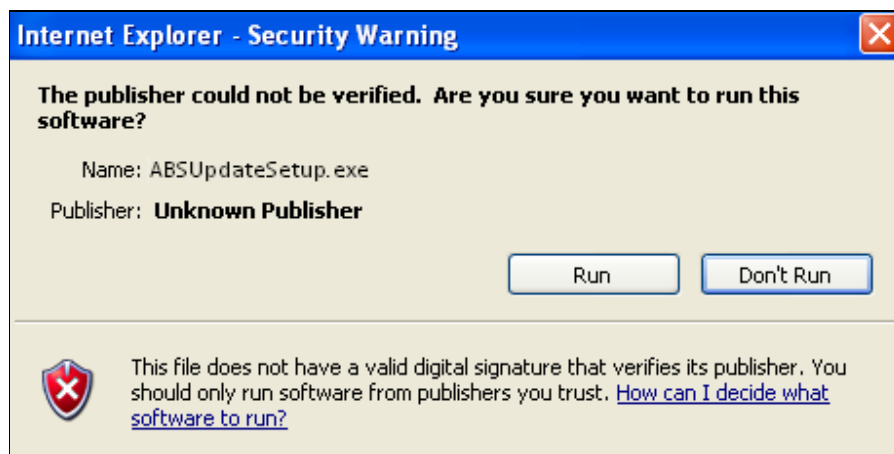


## ABS Updater / ScanLoader Instructions

1. On the CP9449 Update page, click the **download the ABS Updater / ScanLoader application** link.
2. On the File Download – Security Warning window, click **Run**.



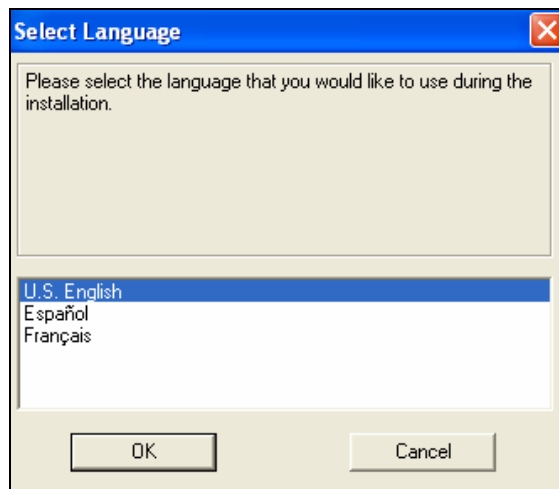
3. On the Internet Explorer – Security Warning window, click **Run**.



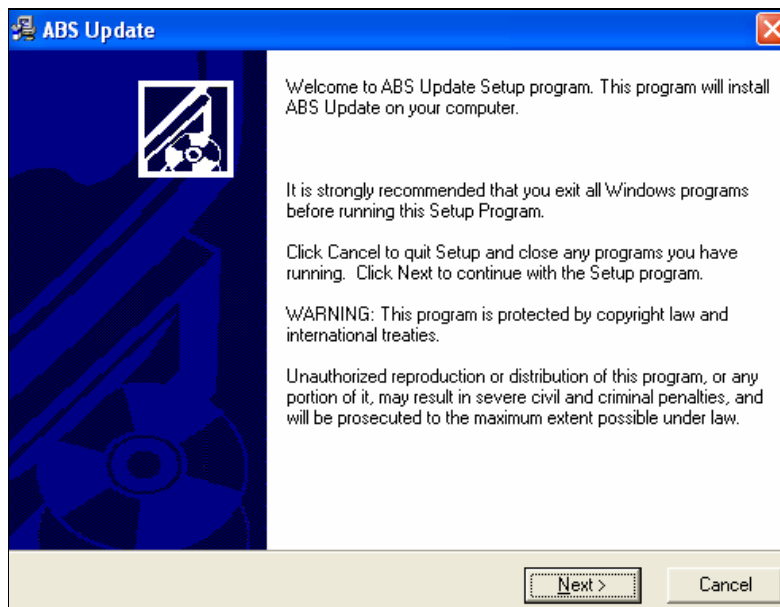
4. The ABS Update Installation, Wise Installation Wizard will begin.



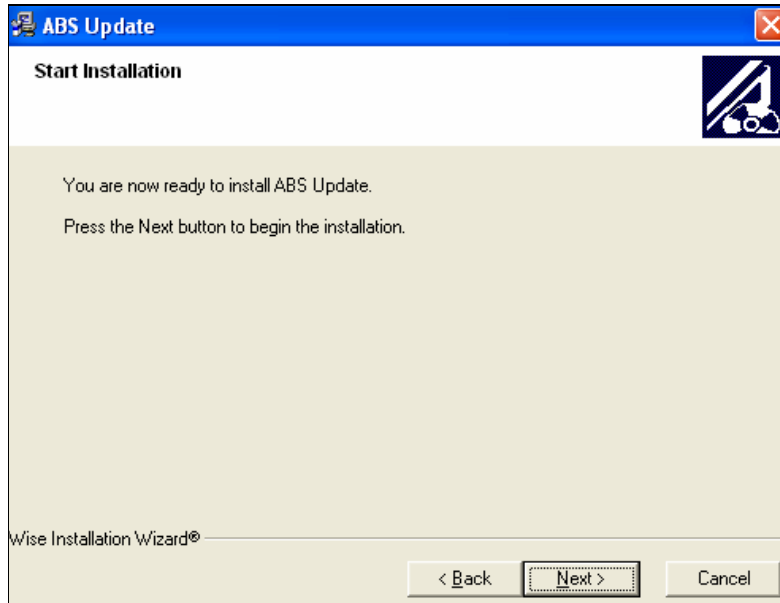
5. Select the language that you would like to use during the installation and click **OK**.



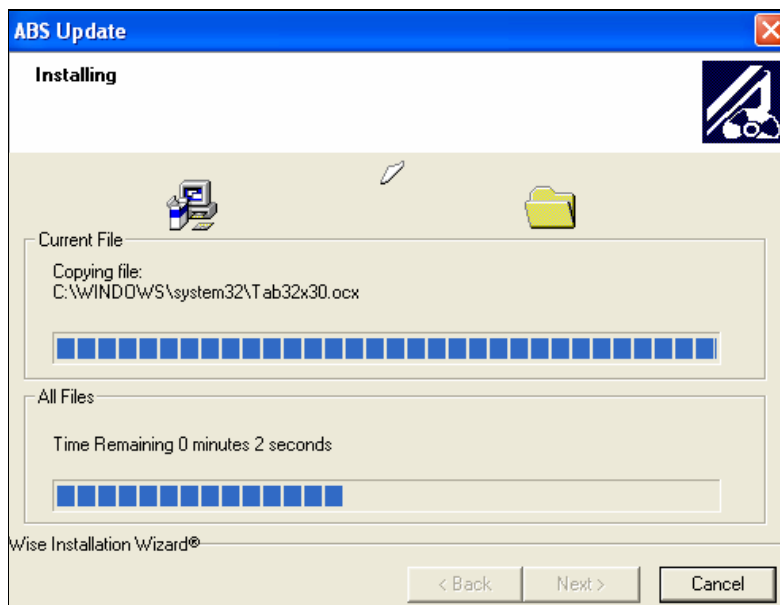
6. It is strongly recommended that you exit all Windows programs before running this Setup Program. If you need to close any programs that you have running, click **Cancel**. Otherwise, click **Next** to proceed.



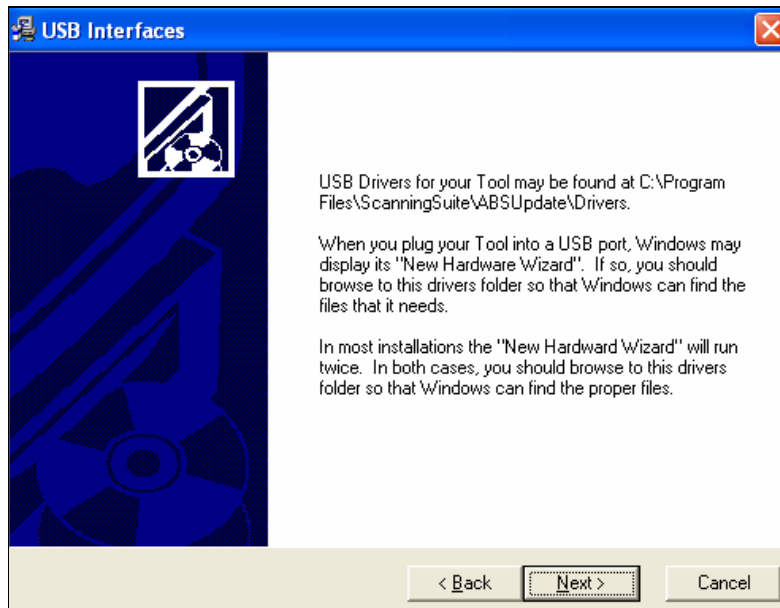
7. To start the installation, click **Next**.



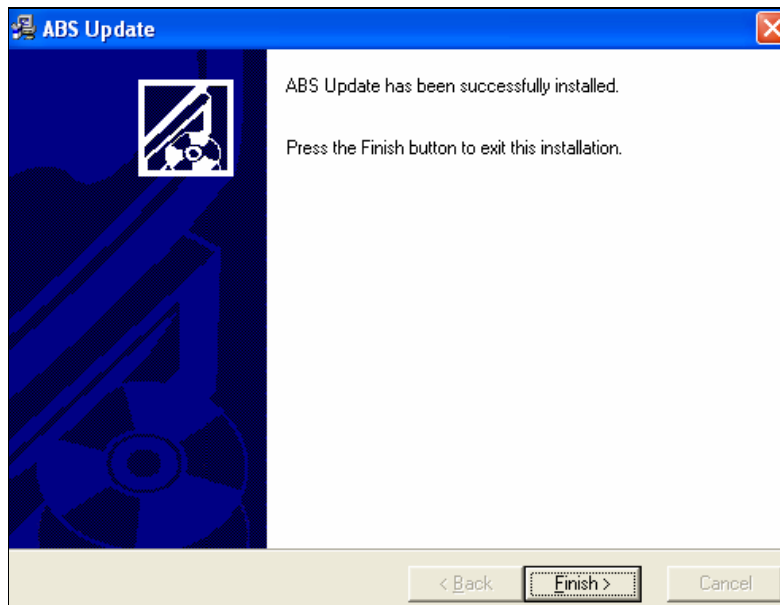
8. The installation will begin.



9. Read the prompt about the USB Cable Diver installation and click **Next** to continue.



10. To complete the ABS Updater installation, click **Finish**.

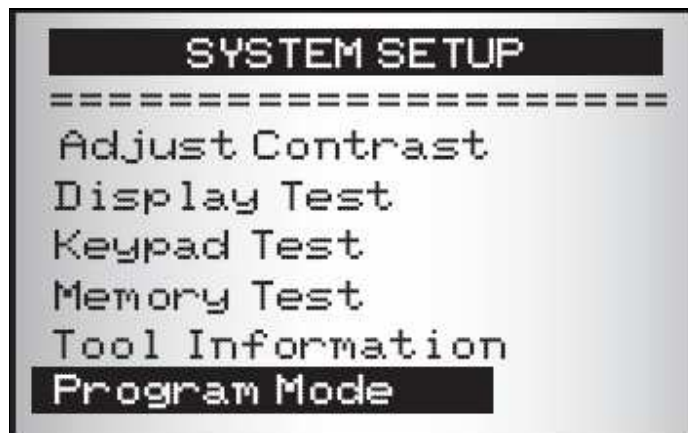


## Update Your Tool

11. Power the tool on, view the **Tool Information** and write down the **SWID #** (software version). You will need to reference this before updating your tool. For detailed instructions about viewing the **Tool Information**, please see the CP9449 User's Guide.



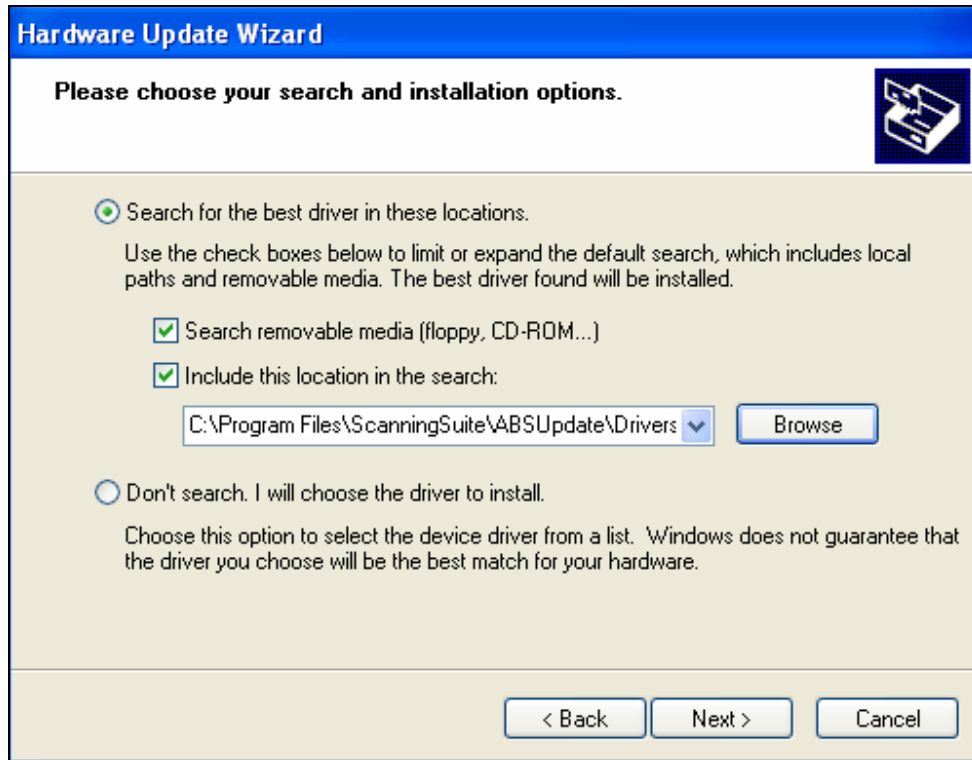
12. Put the tool in **Program Mode** and plug the tool into your PC using a USB-A/5 pin Mini-B cable. For detailed instructions about **Program Mode**, please see the CP9449 User's Guide.



13. Install the USB Cable Driver. The USB Drivers for your tool can be found at:

**C:\Program Files\ScanningSuite\ABSUpdate\Drivers**

When you plug your Tool into a USB port, Windows may display its “New Hardware Wizard”. If so, you must **manually browse** to the driver folder so that Windows can find the file that it needs.



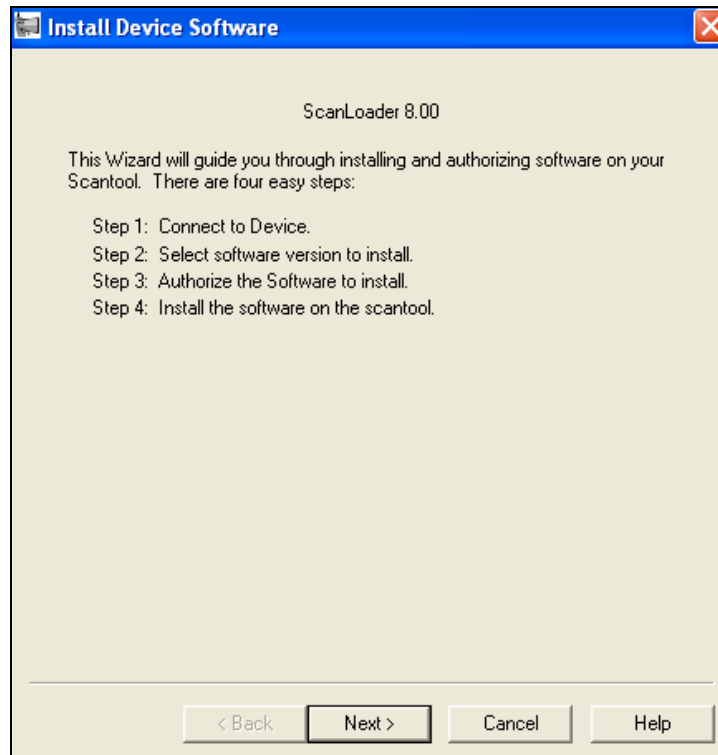
In most installations, the “New Hardware Wizard will run twice. In both cases, you must **manually browse** to the driver folder so that Windows can find the proper files.

**NOTE:** For more detailed instructions, or if the “New Hardware Wizard” does not appear, click the link for detailed USB driver installation instructions on the Tool Update page.

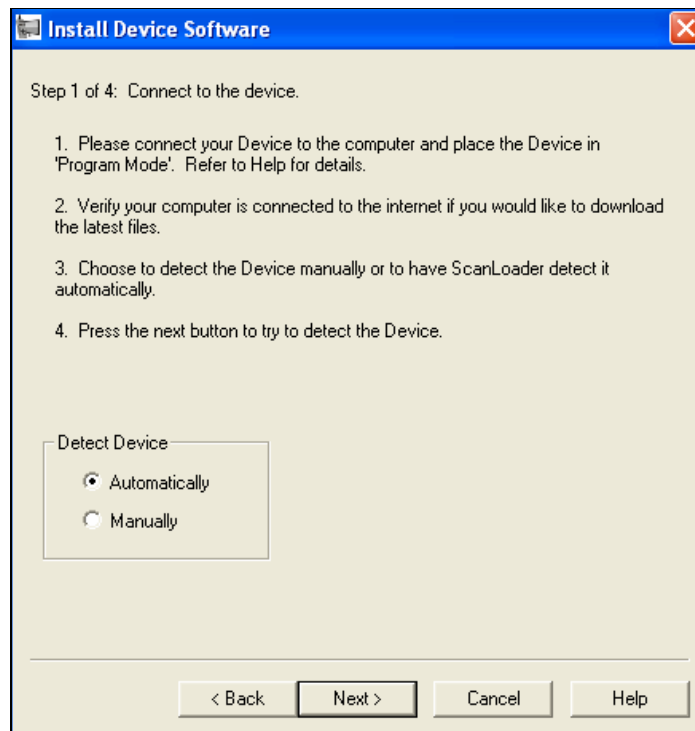
14. Double click on the ABS Updater shortcut on your Windows Desktop. If it cannot be found, click the **Start Menu | All Programs | ABSUpdate** folder, then click the **ABSUpdate** application.



15. ScanLoader 8.0 will begin. Click **Next**.

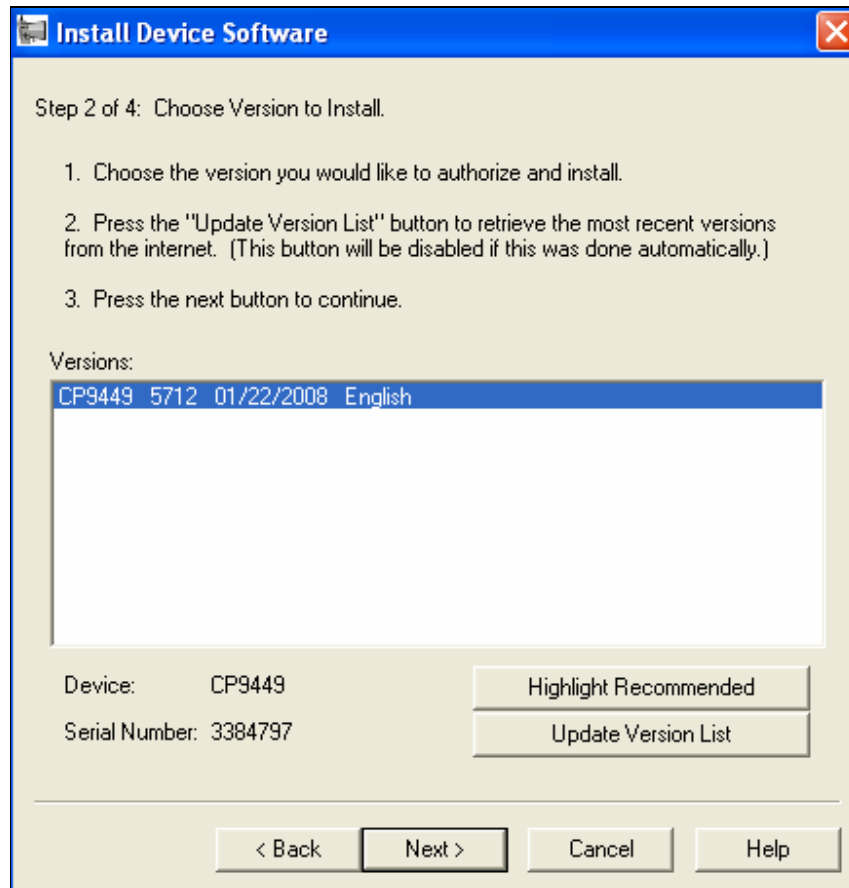


16. Choose whether you would like to manually select the USB port or if you would like ScanLoader to detect it for you.

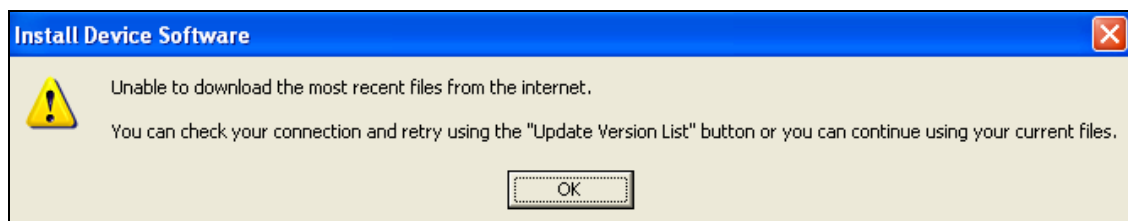


17. View the software versions (**SWID**) available to install. The software version is the four digits shown after the tool model number.

If this number is different than what you wrote down in step 11, click **Next**. If this number is the same, your tool does not require an update, so click cancel to exit the installation.



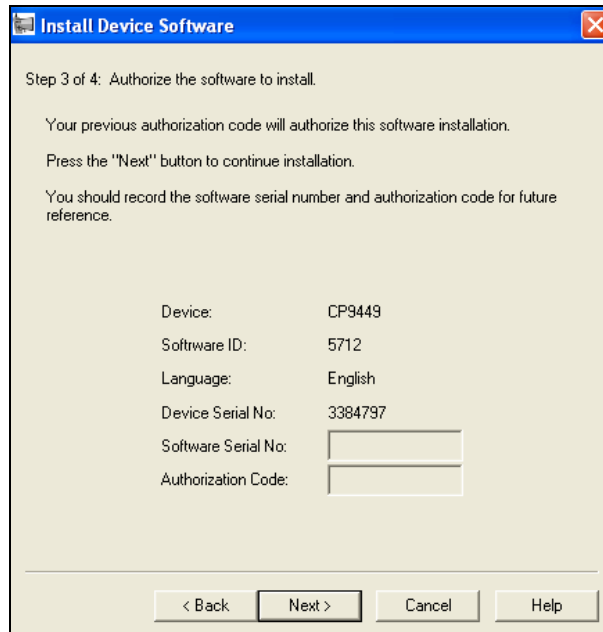
**NOTE:** If you see the below message, your computer may not be properly connected to the internet. To solve, you should verify your internet connection, click **OK**, and then click **Update Version List**.



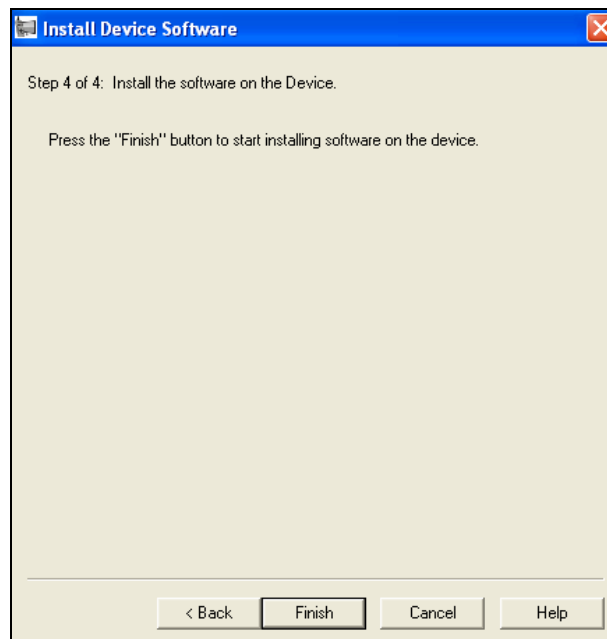
18. Click **Next** to continue the installation.

**NOTE:** The Software Serial No. and Authorization Code are only required for purchased updates. If you did not purchase an update, click **Next**.

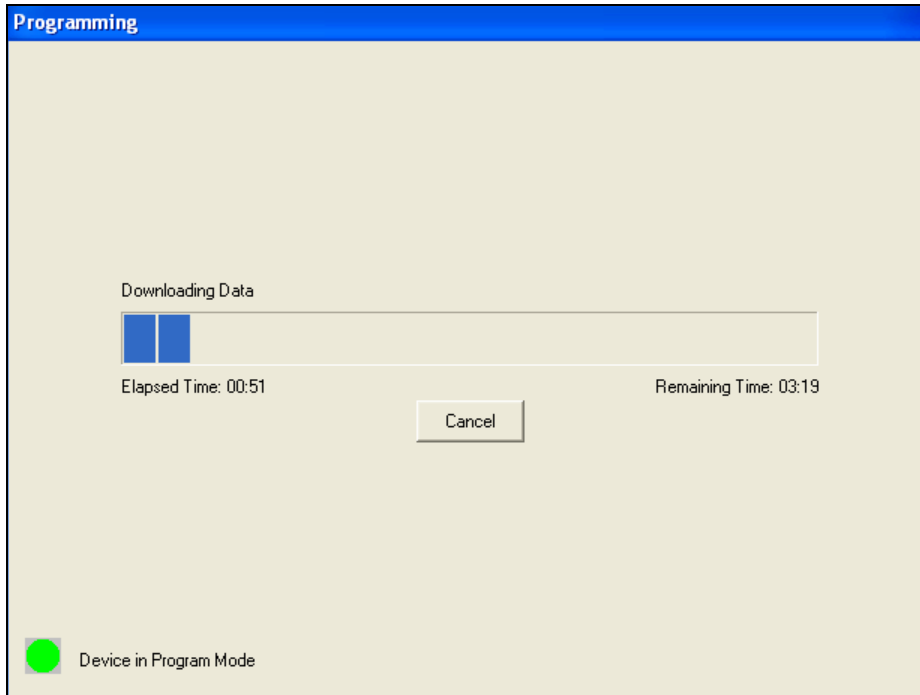
If you did purchase an update, enter the Software Serial No. and Authorization Code in the space provided, and then click **Next**.



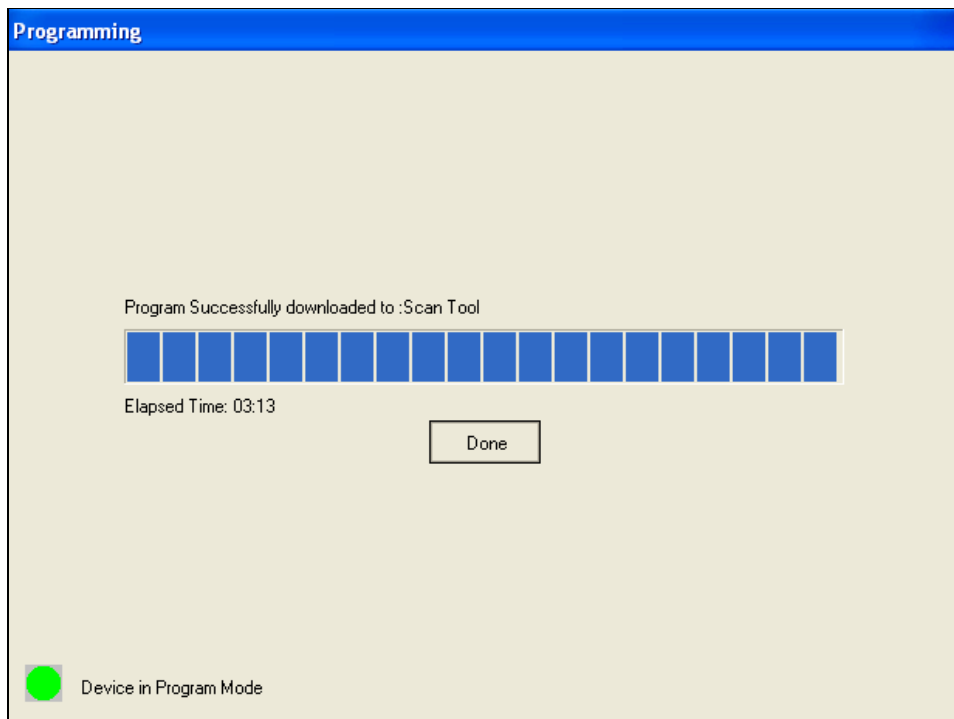
19. Click **Finish** to start installing the software on the tool.



20. The update will begin. Do not power off or disconnect the tool during the update.



21. When the update is complete, you may disconnect the tool from the PC and click **Done**.



© 2008 SPX. All rights reserved.  
0802-000-0118

